

**NOTES:**

Current Rating: 0.5AAMP  
 Contact Resistance: 50mΩ max  
 Voltage Rating: 50V AC/DC  
 Insulation Resistance: 500MΩ min  
 Operation Temperature: -40°C to +105°C

Contact Material: Copper Alloy, T=0.2mm  
 Fixed Tab: Brass, T=0.2mm  
 Contact plating: Au or Sn Over Ni  
 Insulator Material: Glass Filled Polyamide (UL94V-0)  
 Color: Black.

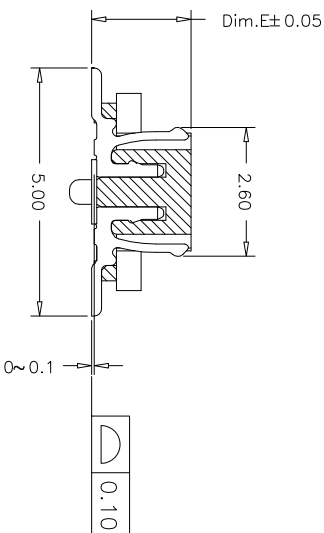
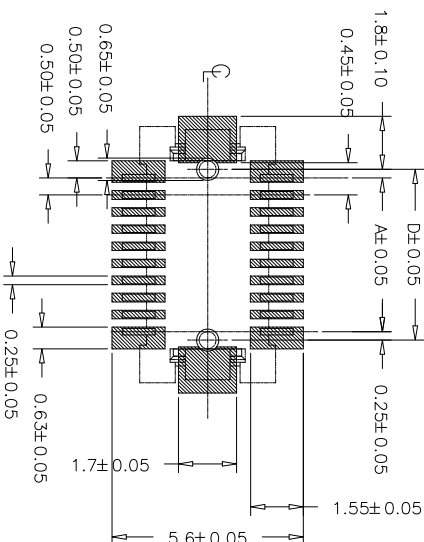
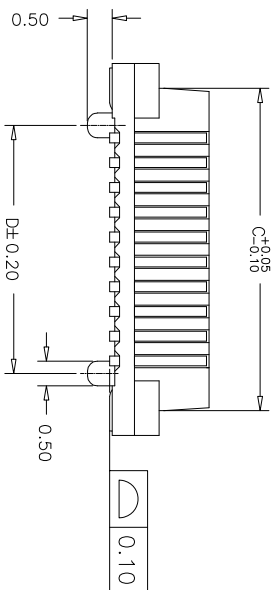
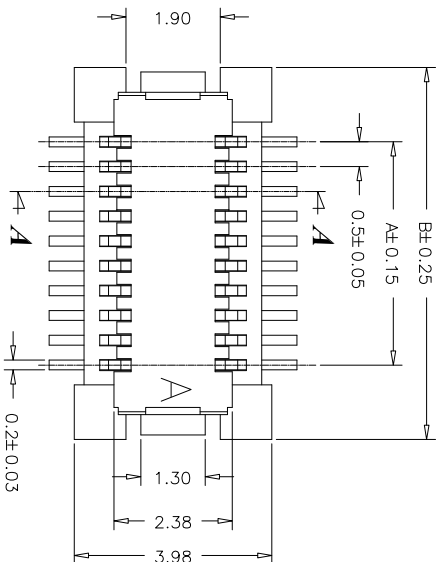
**Mechanical Specifications:**  
 Soldering: Temperature: 230±5/°C Times: 5±0.5S  
 Solder Resistance: Temperature: 245°C±5/°C Times: 3±0.5S

Dim.A=0.50\*No. of Spaces  
 Dim.B=Dim.A+3.0  
 Dim.C=Dim.A+2.0  
 Dim.D=Dim.A+0.5  
 \* Available in 10 through 80 circuits.

## Ordering Information

BT3621 \*\* \* 2 0 R 1 B15

No. of Pins per Row: 10-80  
 Contact Plating: U=Gold Flash X=10u"Gold W=15u"Gold Y=30u"Gold Z=30u"Gold  
 Contact Height: 2=2.0mm 3=3.0mm  
 Pegs Option: W=With Pegs 0=Without Pegs  
 Packing Option: R=1 Tape & Reel T=Tube



**A-A Section**

REV	DATE	MODIFICATION DESCRIPTION	CHANGE	APPROVE	OPERATION	DRAW	SCALE	SHEET	TITLE:
A0	09/01/16	NEW			XX ±0.40	Fany i jin 09/01/16	-	1/2	BT3621***20R1B15
					XXX ±0.25	DESIGN	mm		BMA TECHNOLOGIES LTD
					X.XXX ±0.15	CHECK	A4		TECHNICAL@BMA.LTD
					Angle ± 3'				
					DM TOL	APPROVE			0.5mm Pitch Board to Board Plug